



Loadbreak disconnectors for wall mounting

Dilos 1H - 40A up to 125A
Dilos 3 - 160A up to 315A
Dilos 4 - 400A up to 630A



Order codes

A

B

C

D

E

X

Applications



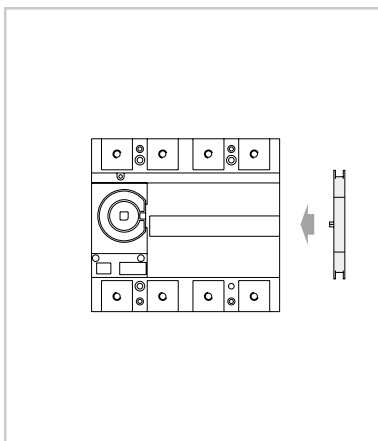
Approvals / Marking



Dilos 1H-3-4

Dilos 1H

Add-on devices



Performance

Wall mounting
 Main disconnector, safety disconnector
 Disconnect function
 Visible contact indication - transparent cover
 Quick make and quick break mechanism
 Independent opening and closing
 Positive contact indication (PCI)
 Defeat mechanism rotary handle
 Double knife contacts - high short-circuit resistance
 Number of poles 3P - 4P
 With changeover system

Standards

IEC 60947-1 and IEC 60947-3, DIN VDE 0660 Teil 107,
 BS EN 60947-3, CEI 17-11 (Fasc. 1039), EN 60947-3,
 NBN EN 60947-3, NF C 63-130, UL 508
 Safety disconnector (red/yellow) according to DIN VDE 0113 Teil 1



Technical data

	Dilos 1H	Dilos 3	Dilos 4
Rated thermal current	40A - 125A	160A - 315A	400A - 630A
Rated operational voltage Ue	690V	690V	690V
Rated insulation voltage Ui	1000V	1000V	1000V
Peak short withstand circuit current	10kA	30kA	60kA
Rated short-circuit current	50kA	100kA	100kA
High 1s rated short time withstand Icw	3kA	9kA	20kA
Terminal capacity (Cu)	6 - 50 mm ²	Cu-rail 30x6	Cu-rail 2x40x6

Technical data ● pg. C.4
 Installation facilities ● pg. D.6
 Dimensions ● pg. E.4



Dilos 3 - Loadbreak disconnectors for wall mounting

Transparent		Description	In (A)	Cat. no.	Ref. no.	Pack.
	3P		160	D/061334-201	730463	1
			200	D/061335-201	730466	1
			250	D/061336-201	730469	1
			315	D/061337-201	730472	1
	3P+N		160	D/061434-201	730491	1
			200	D/061435-201	730494	1
			250	D/061436-201	730497	1
			315	D/061437-201	730500	1
	3P+NF	Fixed neutral	160	D/061534-201	730519	1
			200	D/061535-201	730522	1
			250	D/061536-201	730525	1
			315	D/061537-201	730528	1
Safety						
	3P	Yellow label, according to DIN VDE 0113 Teil 1	160	D/061334-203	730464	1
			200	D/061335-203	730467	1
			250	D/061336-203	730470	1
	3P+N	Yellow label, according to DIN VDE 0113 Teil 1	160	D/061434-203	730492	1
			200	D/061435-203	730495	1
			250	D/061436-203	730498	1

Accessories Dilos 3

	Direct handles						
	D/061940-252	731538	1				
	Low, grey						
	D/061940-253	731539	1				
	Low, red						
	D/061940-211	730649	1				
	Grey, padlockable						
	D/061940-213	730650	1				
	Red, padlockable						
	D/061940-231	730651	1				
	Grey, keylockable and padlockable (Keylock not included)						
	D/061940-233	730652	1				
	Red, keylockable and padlockable (Keylock not included)						
	Handles for inner door						
	IP65 - Padlockable						
	With extension shaft 300 mm						
	Reduced height = 55 mm						
	D/062927-202	731056	1				
	Black						
D/062927-203	731351	1					
	Red/yellow						
	Keylock						
	D/769080-000	769080	1				
	Plug-in for handles (Ronis 1104)						
	Handles for cover or hinged door						
	IP65 - Defeat - Padlockable						
	With extension shaft 300 mm (8/8)						
	D/062920-201	730661	1				
	Black						
	D/062920-203	730662	1				
	Red/yellow						
	D/062920-221	730663	1				
	Black with keylockable plug-in (Ronis 1104)						
	D/062920-223	730664	1				
Red/yellow with keylockable plug-in (Ronis 1104)							
D/062920-281	730853	1					
Special set for disconnector with neutral on the right, black							
D/062920-283	730854	1					
Special set for disconnector with neutral on the right, red/yellow							
	Inbus key						
	D/061000-097	730000	1				
	Insulated S5 - L = 200 mm						

Accessories Dilos 3 (continued)



Changeover system (I-O-II)

With extension shaft 300 mm, padlockable handle, gasket, flange and template

IP65 - defeat

D/062920-265 | **730665** | 1

With grey handle

D/062920-267 | **731348** | 1

With red/yellow handle

As above but with handle 55 mm height - for inner door

D/062937-265 | **731455** | 1

With black handle

D/062937-267 | **731554** | 1

With red/yellow handle

Standard auxiliary contacts

To be added on the right side

D/061901-001 | **730252** | 1

1PCO

D/061901-002 | **730253** | 1

2PCO

Max. current rating for AC 15 and DC 13

AC 3A at 380V

5A at 220V

DC 0.5A at 220V

0.7A at 110V

1A at 60V

2A at 48V

4A at 24V



6P/8P-system (I-O)

With extension shaft 300 mm, padlockable handle, gasket, flange and template

IP65 - defeat

D/062920-266 | **730666** | 1

With grey handle

Anticipated auxiliary contacts

(early make and early break)

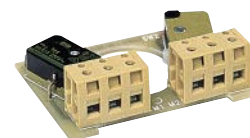
To be mounted inside

D/062921-201 | **730610** | 1

1CO

D/062921-202 | **730611** | 1

2CO



Terminals (Cu or Al 185 mm²)

D/062922-213 | **730627** | 1

Set of 3 V box terminals with cover

D/062922-214 | **730628** | 1

Set of 4 V box terminals with cover

D/062922-203 | **730625** | 1

Set of 3 terminals with cover

D/062922-204 | **730626** | 1

Set of 4 terminals with cover

Terminal covers

D/062922-220 | **730615** | 1

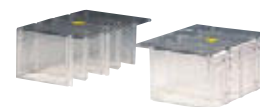
Set of 2 long covers 4P, boxed

Sealable

D/062922-226 | **731459** | 1

Set of 2 short covers 4P, boxed

IP20 and sealable



Rear connections with cover

D/062922-253 | **730629** | 1

Set of 3 pieces

D/062922-254 | **730630** | 1


Set of 4 pieces

D/062922-221 | **730616** | 1

Set of 2 connection bolt covers 4P



Dilos - Loadbreak disconnectors for DIN-rail mounting

			Dilos 00	Dilos 00	Dilos 00	Dilos 00	Dilos 0
							
Conventional enclosed thermal current $I_{the} = I_{th}$	(A)		16	25	32	40	32
Number of poles			3	3	3	3	2/3/4
Frequency	(Hz)		50/60	50/60	50/60	50/60	50/60
Rated thermal current at	40°C	(A)	16	25	32	40	32
	50°C	(A)	16	25	32	40	32
	60°C	(A)	16	25	32	40	32
Power loss per pole	(W)		0.12	0.35	0.6	1	0.6
Terminal capacity (Cu)	minimum	(mm ²)	1.5	1.5	1.5	1.5	2.5
	maximum	(mm ²)	16	16	16	16	25
Maximum torque on terminals	(Nm)		2.2	2.2	2.2	2.2	-
Rated operational voltage Ue	(V)		690	690	690	690	415
Rated insulation voltage Ui	(V)		690	690	690	690	415
Rated impulse withstand voltage (2000m) Uimp	(kV)		8	8	8	8	8
Impulse test voltage at sea level	(kV)		12.3	12.3	12.3	12.3	12.3
Rated operational current Ie AC21A	Ue=400V	(A)	16	25	32	40	32
	Ue=415V	(A)	16	25	32	40	32
	Ue=500V	(A)	16	25	32	40	-
	Ue=690V	(A)	16	25	32	40	-
Rated operational current Ie AC22A	Ue=400V	(A)	16	25	32	40	32
	Ue=415V	(A)	16	25	32	40	32
	Ue=500V	(A)	16	25	32	40	-
	Ue=690V	(A)	16	25	32	40	-
Rated operational current Ie AC23A	Ue=400V	(A)	16	25	32	40	32
	Ue=415V	(A)	16	25	32	40	32
	Ue=500V	(A)	16	25	32	40	-
	Ue=690V	(A)	16	25	25	25	-
Maximum rated operational power at rated duty AC23	Ue=400V	(kW)	7.5	7.5	11	11	17
	Ue=415V	(kW)	7.5	7.5	11	11	17
	Ue=500V	(kW)	7.5	7.5	11	15	-
	Ue=690V	(kW)	11	11	11	18.5	-
Rated making and breaking capacity at 415V AC23A	making 10 x Ie	(A)	160	250	320	400	320
	breaking 8 x Ie	(A)	128	200	256	320	256
Rated short time withstand current Icw	1 s.	(kA rms)	1	1	1.2	1.2	2.5
	0.25 s.	(kA rms)	-	-	-	-	-
Rated short-circuit making capacity Icm	Ue=400V	(kA peak)	4.5	4.5	4.5	4.5	6
	Ue=415V	(kA peak)	4.5	4.5	4.5	4.5	6
	Ue=500V	(kA peak)	3	3	3	3	-
	Ue=690V	(kA peak)	3	3	3	3	-
Rated conditional short-circuit current with back-up protection featuring the same current rating as the switch (kA rms)	400V	(kA)	50	50	50	50	15
	415V	(kA)	50	50	50	50	15
	500V	(kA)	50	50	50	50	-
	690V	(kA)	50	50	50	50	-
Rated capacity power at 400V	(kVAR)		-	-	-	-	-
Rated operational current DC23A	2P in series 110V	(A)	-	25	32	40	-
	2P in series 220V	(A)	-	25	-	-	-
	4P in series 220V	(A)	-	-	-	-	-
Operating torque	(Nm)		0.5	0.5	0.5	0.5	2.5
Force	(N)		-	-	-	-	50
Durability (number of operational cycles)	electrical		3000	3000	3000	3000	1000
	mechanical (min)		40000	40000	40000	40000	10000
UL listed following UL file E143291 (acc UL508)							
UL 508 General Use 480V	In	(A)	-	-	-	-	-
UL 508 Manual motor controller 480V	FLA	(A)	-	-	-	-	-
	Power	(HP)	-	-	-	-	-
UL short-circuit at 480V	K5fu	(kA)	-	-	-	-	-
	UL J-fuses	(kA)	-	-	-	-	-
Weight	2P	(kg)	0.125	0.125	0.125	0.125	0.27
	3P	(kg)	0.125	0.125	0.125	0.125	0.29
	4P	(kg)	0.170	0.170	0.170	0.170	0.33

Technical data

A

B

C

D

E

X



Dilos - Loadbreak disconnectors for wall mounting



			Dilos 1H	Dilos 1H	Dilos 1H	Dilos 3	Dilos 3	Dilos 3	
Conventional enclosed thermal current $I_{the} = I_{th}$		(A)	40	63	125	160	200	250	
Number of poles			3/4	3/4	3/4	3/4	3/4	3/4	
Frequency		(Hz)	50/60	50/60	50/60	50/60	50/60	50/60	
Rated thermal current at	40°C	(A)	40	63	125	160	200	250	
	50°C	(A)	40	63	125	160	200	250	
	60°C	(A)	40	63	125	160	200	250	
Power loss per pole		(W)	0.9	2.2	8.5	3	4.8	7.5	
Terminal capacity (Cu)	minimum	(mm ²)	6	6	6	Cu-rail	Cu-rail	Cu-rail	
	maximum	(mm ²)	50	50	50	30x6	30x6	30x6	
Maximum torque on terminals		(Nm)	12	12	12	12	12	12	
Rated operational voltage U_e		(V)	690	690	690	690	690	690	
Rated insulation voltage U_i		(V)	1000	1000	1000	1000	1000	1000	
Rated impulse withstand voltage (2000m) U_{imp}		(kV)	8	8	8	8	8	8	
Impulse test voltage at sea level		(kV)	12.3	12.3	12.3	12.3	12.3	12.3	
Rated operational current I_e	$U_e=400V$	(A)	40	63	125	160	200	250	
	AC21A up to 250A	$U_e=415V$	(A)	40	63	125	160	200	250
	AC21B from 315A	$U_e=500V$	(A)	40	63	125	160	200	250
		$U_e=690V$	(A)	40	63	125	160	200	250
Rated operational current I_e	$U_e=400V$	(A)	40	63	125	160	200	250	
	AC22A up to 250A	$U_e=415V$	(A)	40	63	125	160	200	250
	AC22B from 315A	$U_e=500V$	(A)	40	63	125	160	200	250
		$U_e=690V$	(A)	40	63	125	160	200	250
Rated operational current I_e	$U_e=400V$	(A)	40	63	125	160	200	250	
	AC23A up to 250A	$U_e=415V$	(A)	40	63	125	160	200	250
	AC23B from 315A	$U_e=500V$	(A)	40	63	125	160	200	250
		$U_e=690V$	(A)	40	50	50	160	200	250
Maximum rated operational power at rated duty AC23	$U_e=400V$	(kW)	21	30	69	88	88	135	
	$U_e=415V$	(kW)	22	33	72	92	92	140	
	$U_e=500V$	(kW)	27	44	86	110	175	175	
	$U_e=690V$	(kW)	36	45	45	140	190	190	
Rated making and breaking capacity at 500Vac 23A	making $10 \times I_e$	(A)	400	630	1250	1600	2000	2500	
	breaking $8 \times I_e$	(A)	320	504	1000	1280	1600	2000	
Rated short time withstand I_{cw}	1 s.	(kA rms)	3	3	3	9	9	9	
	0.25 s.	(kA rms)	6	6	6	15	15	15	
Rated short-circuit making capacity I_{cm}	$U_e=400V$	(kA peak)	10	10	10	30	30	30	
	$U_e=415V$	(kA peak)	10	10	10	30	30	30	
	$U_e=500V$	(kA peak)	7	7	7	30	30	30	
	$U_e=690V$	(kA peak)	7	7	7	30	30	30	
Rated conditional short-circuit current with back-up protection featuring the same current rating as the switch (kA ms)	400V	(kA)	50	50	50	100	100	100	
	415V	(kA)	50	50	50	100	100	100	
	500V	(kA)	50	50	50	100	100	100	
	690V	(kA)	33	33	33	100	100	100	
Rated capacity power at 400V		(kVAR)	19	30	60	77	97	120	
Rated operational current DC23A	2P in series 110V	(A)	40	63	100	160	200	250	
	2P in series 220V	(A)	40	63	-	100	160	160	
	4P in series 220V	(A)	-	-	100	160	200	250	
Operating torque		(Nm)	8	8	8	12	12	12	
Force		(N)	80	80	80	120	120	120	
Durability (number of operational cycles)	electrical		5000	2000	1000	3000	1000	1000	
	mechanical (min)		15000	15000	10000	10000	10000	10000	
UL listed following UL file E143291 (acc UL508)									
UL 508 General Use 480V	In	A	30	60	100	-	-	-	
UL 508 Manual motor controller 480V	FLA	A	-	-	-	-	-	-	
	Power	(HP)	-	-	-	-	-	-	
UL short-circuit at 480V	K5fu	(kA)	10	10	10	-	-	-	
	UL J-fuses	(kA)	50	50	50	-	-	-	
Weight	2P	(kg)	-	-	-	-	-	-	
	3P	(kg)	1.18	1.18	1.18	2.75	2.75	2.75	
	4P	(kg)	1.25	1.25	1.25	2.90	2.90	2.90	

Technical data

A

B

C

D

E

X



Dilos 3	Dilos 4	Dilos 4	Dilos 4	Dilos 6S 35/50kA	Dilos 6S 35/50kA	Dilos 6S 35/50kA	Dilos 7S	Dilos 8S	Dilos 8S	Dilos 9S	Dilos 9
315	400	500	630	800	1000	1250	1600	2000	2500	3150	4000
3/4	3/4	3/4	3/4	3/4	3/4	3/4	3/4	3/4	3/4	3/4	3/4
50/60	50/60	50/60	50/60	50/60	50/60	50/60	50/60	50/60	50/60	50/60	50/60
315	400	500	630	800	1000	1250	1600	2000	2500	3150	4000
315	400	500	630	720	900	1125	1440	1800	2250	2835	3600
315	400	500	630	640	800	1000	1280	1600	2000	2520	3200
12	10.5	16	26	29	45	70	95	103	133	420	500
Cu-rail	Cu-rail	Cu-rail	Cu-rail	Cu-rail	Cu-rail	Cu-rail	Cu-rail	Cu-rail	Cu-rail	Cu-rail	Cu-rail
30x6	40x6	40x6	40x6	2x50x5	2x50x6	2x50x8	2x60x10	2x80x10	2x80x10	4x100x10	4x100x10
12	60	60	60	35	35	35	35	35	35	35	35
690	690	690	690	1000	1000	1000	1000	1000	1000	1000	1000
1000	1000	1000	1000	1500	1500	1500	1500	1500	1500	1500	1500
8	8	8	8	12	12	12	8	8	8	8	8
12.3	12.3	12.3	12.3	18.5	18.5	18.5	12.3	12.3	12.3	12.3	12.3
315	400	500	630	800	1000	1250	1600	2000	2500	3150	4000
315	400	500	630	800	1000	1250	1600	2000	2500	3150	4000
315	400	500	630	800	1000	1250	1600	2000	2500	3150	4000
315	400	500	630	800	1000	1250	1600	2000	2500	3150	4000
315	400	500	630	800	1000	1250	1600	2000	2500	-	-
315	400	500	630	800	1000	1250	1600	2000	2500	-	-
315	400	500	630	800	1000	1250	1250	1250	1250	-	-
315	400	500	630	800	1000	1250	1000	1000	800	-	-
315	400	500	630	800	1000	1250	1250	1250	-	-	-
315	400	500	630	800	1000	1250	1250	1250	-	-	-
315	400	500	630	630	800	800	800	800	-	-	-
200	400	400	450	500	630	630	630	630	-	-	-
165	218	270	335	-	-	-	-	-	-	-	-
175	230	285	375	-	-	-	-	-	-	-	-
220	295	370	405	-	-	-	-	-	-	-	-
190	390	440	440	-	-	-	-	-	-	-	-
3150	4000	5000	6300	8000	10000	12500	16000	20000	-	-	-
2520	3200	4000	5040	6400	8000	10000	12800	16000	-	-	-
9	20	20	20	35 / 50	35 / 50	35 / 50	50	50	50	50	50
15	35	35	35	70 / 100	70 / 100	70 / 100	120	120	140	140	100
30	60	60	60	73.5 / 105	73.5 / 105	73.5 / 105	105	105	105	105	105
30	60	60	60	73.5 / 105	73.5 / 105	73.5 / 105	105	105	105	105	105
30	60	60	60	-	-	-	-	-	-	-	-
30	60	60	60	-	-	-	-	-	-	-	-
70	100	100	100	50	50	50	50	50	50	50	50
70	100	100	100	50	50	50	50	50	50	50	50
50	100	100	100	-	-	-	-	-	-	-	-
50	100	100	100	-	-	-	-	-	-	-	-
152	193	242	305	380	475	600	780	850	1100	1250	-
315	400	-	-	800	1000	1250	800	800	-	-	-
160	-	-	-	800	1000	1000	800	800	-	-	-
315	400	-	-	-	-	-	-	-	-	-	-
12	40	40	40	45 / 70	45 / 70	45 / 70	70	70	70	70	150
120	333	333	333	160	160	160	174	174	174	174	330
800	1000	700	500	1000	1000	1000	1000	500	500	500	500
10000	5000	5000	5000	4000	4000	4000	4000	2500	2500	2500	2500
-	-	-	-	-	-	-	-	-	-	-	-
-	-	-	-	-	-	-	-	-	-	-	-
-	-	-	-	-	-	-	-	-	-	-	-
-	-	-	-	-	-	-	-	-	-	-	-
-	-	-	-	-	-	-	-	-	-	-	-
2.75	9.00	9.00	9.00	11	11	11	17	19	27	40	84
2.90	9.60	9.60	9.60	12	12	12	19	20	30	44	108

A

B

C

D

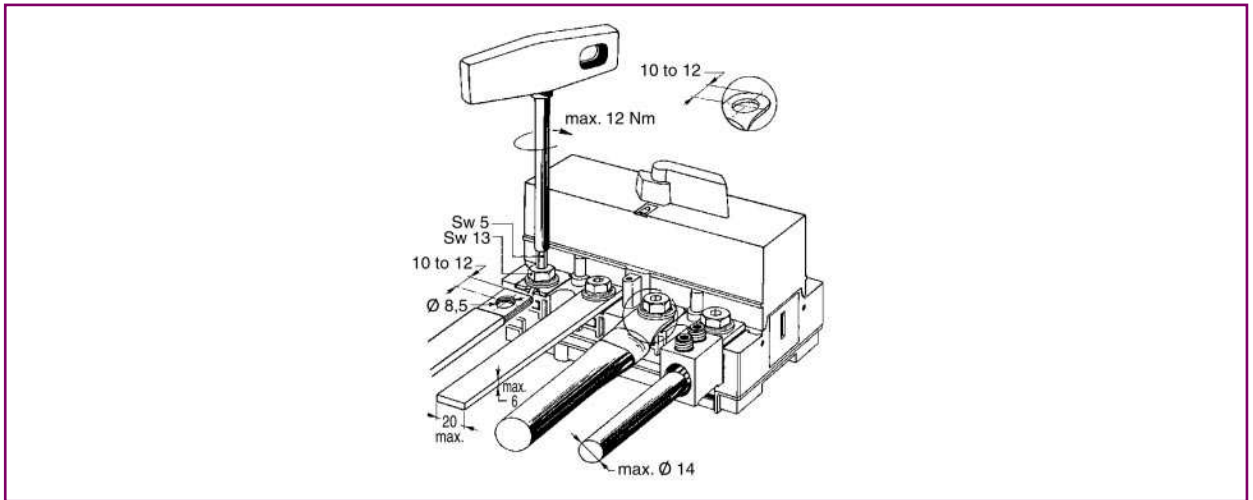
E

X

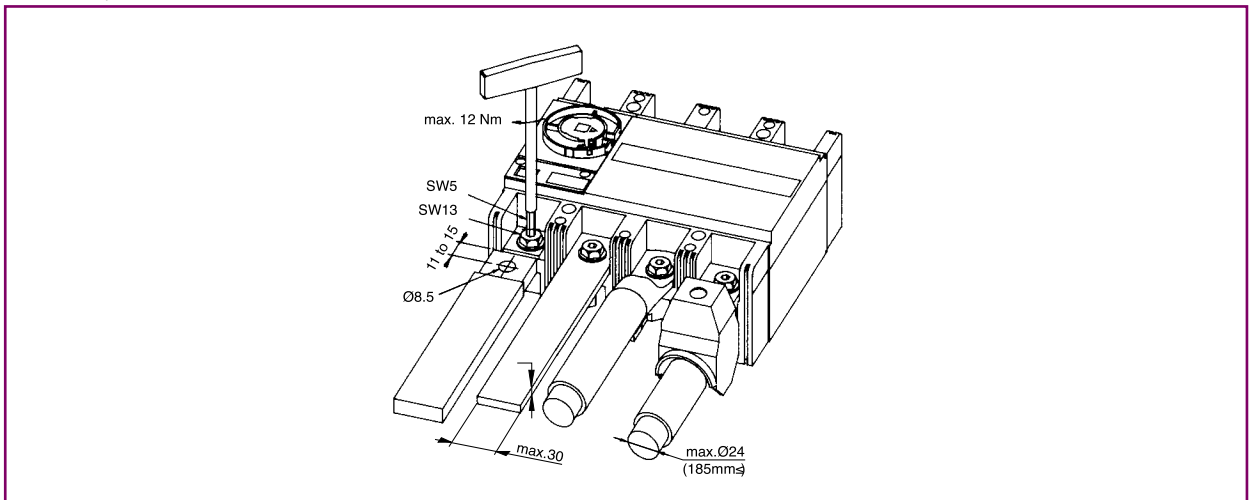


Connection possibilities

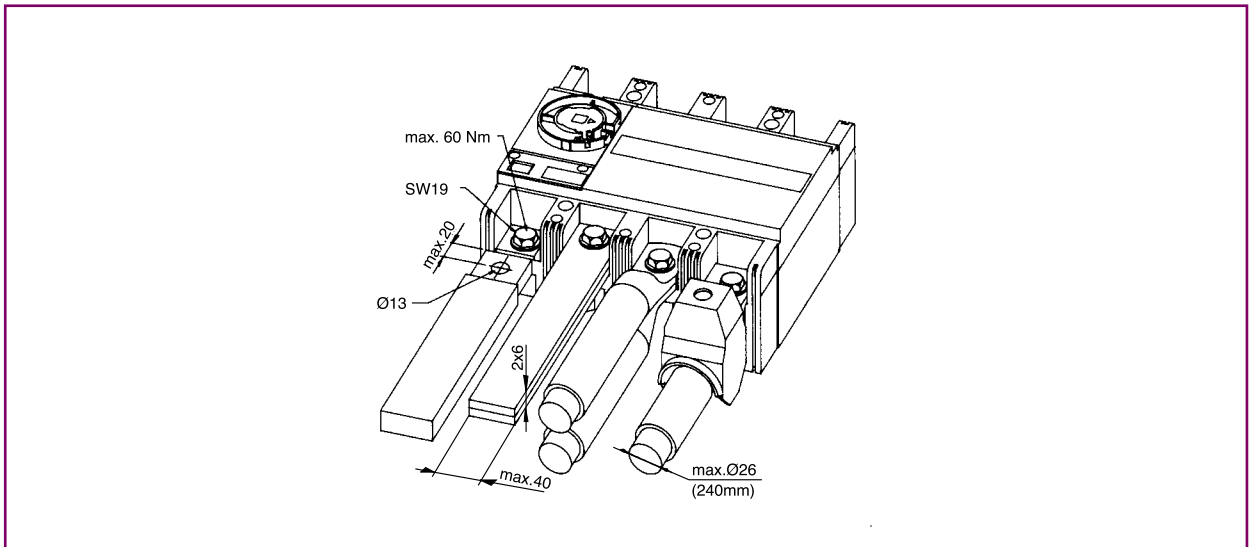
Dilos 2



Dilos 3 / Fulos 00

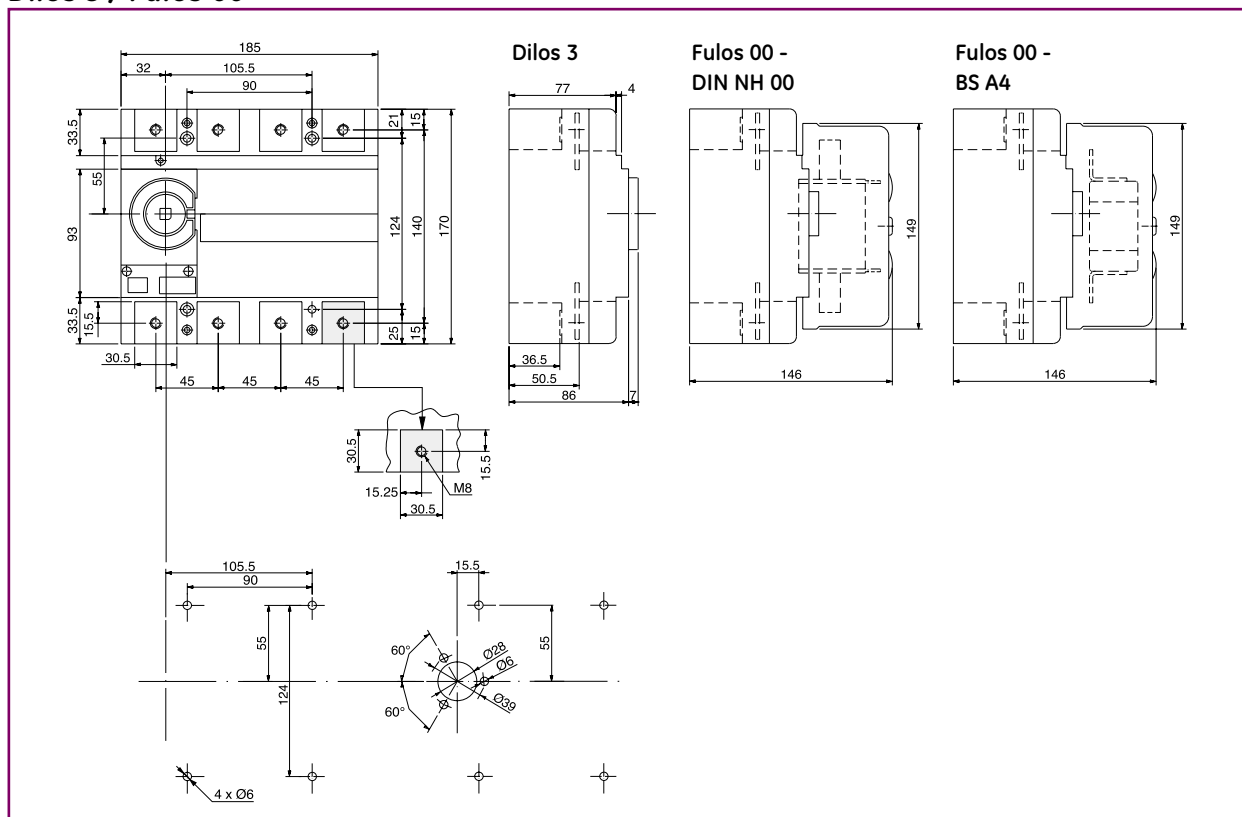


Dilos 4 / Fulos 1 / Fulos 2

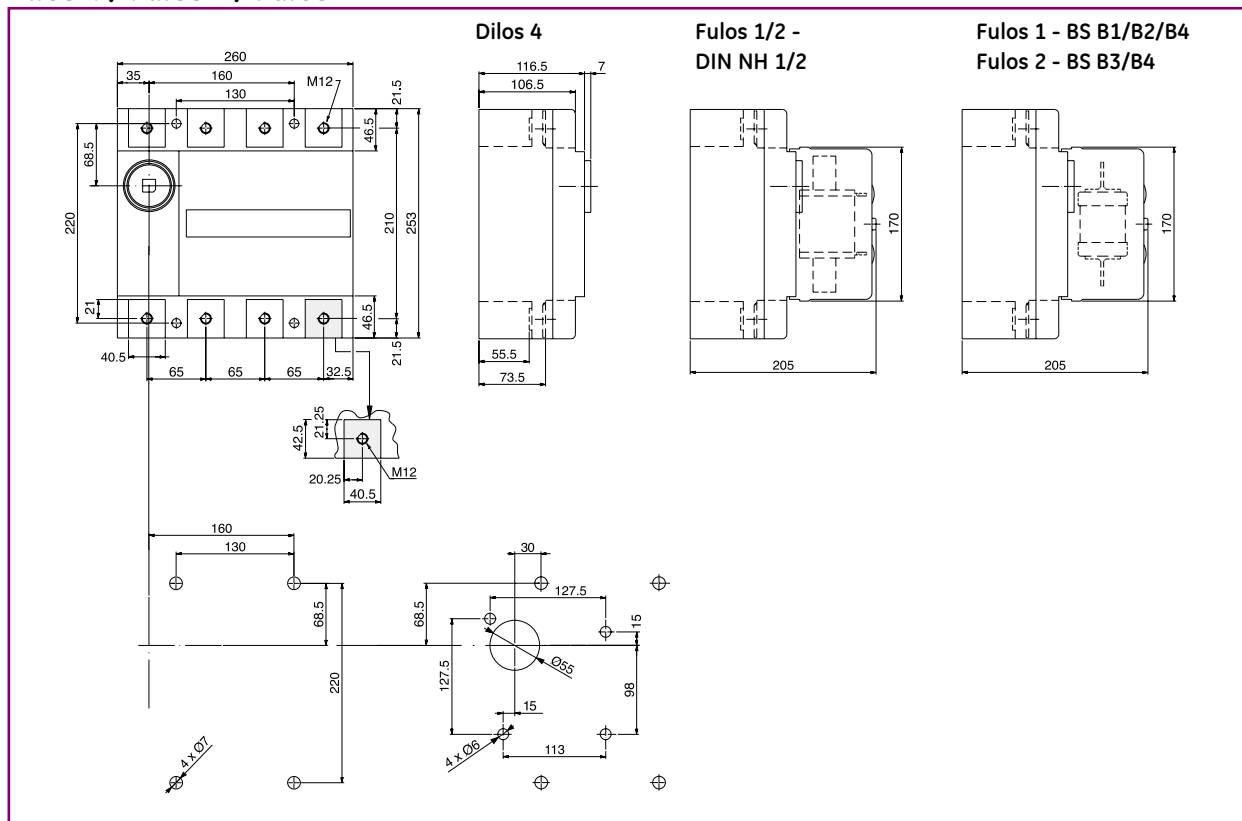




Dilos 3 / Fulos 00



Dilos 4 / Fulos 1 / Fulos 2



Dilos/Fulos

A

B

C

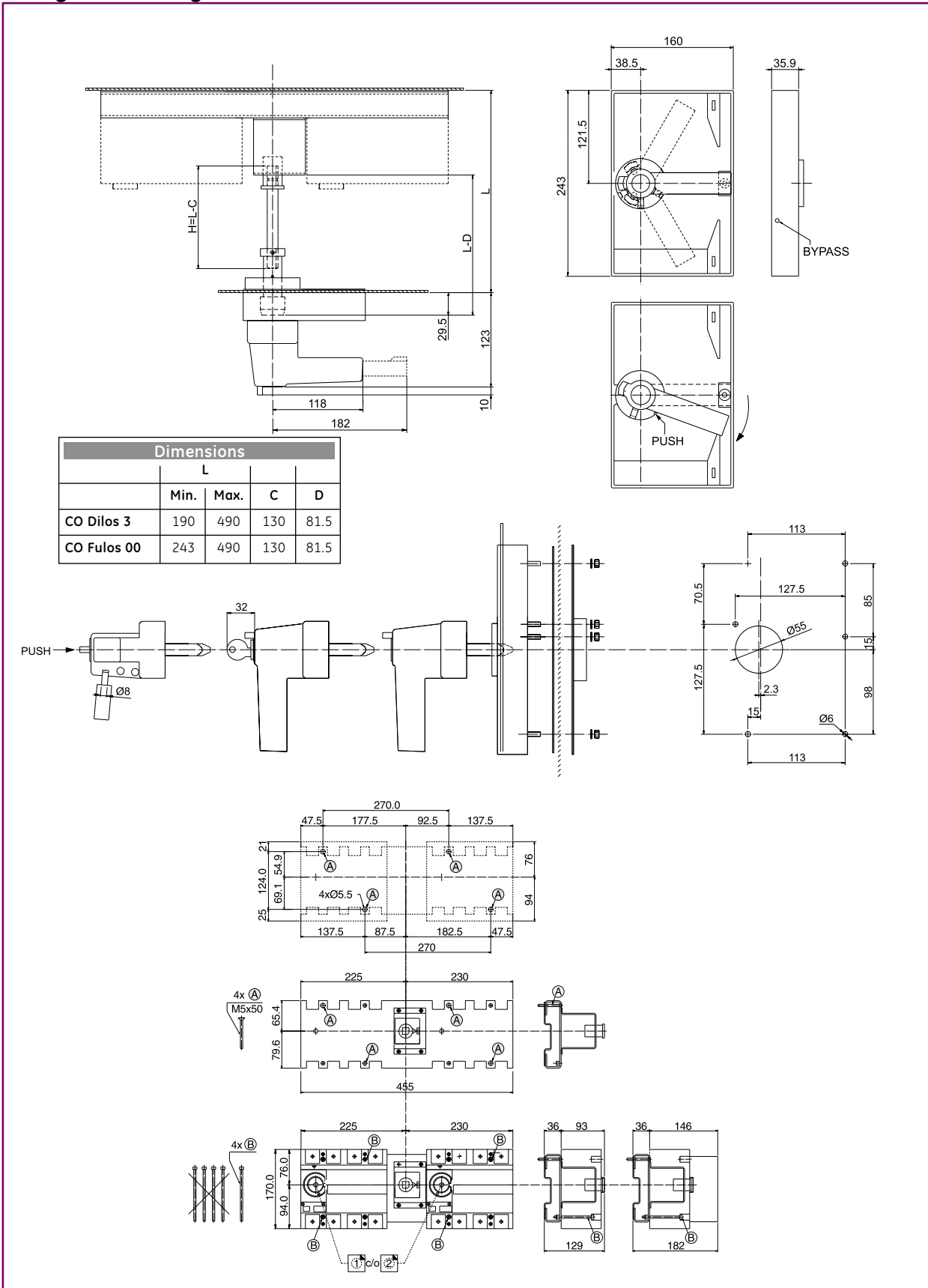
D

E

X



Changeover (CO) system - Dilos 3 / Fulos 00



Dilos/Fulos

A

B

C

D

E

X

Dimensions

6/8P system - Dilos 3 / Fulos 00

Dimensions

A

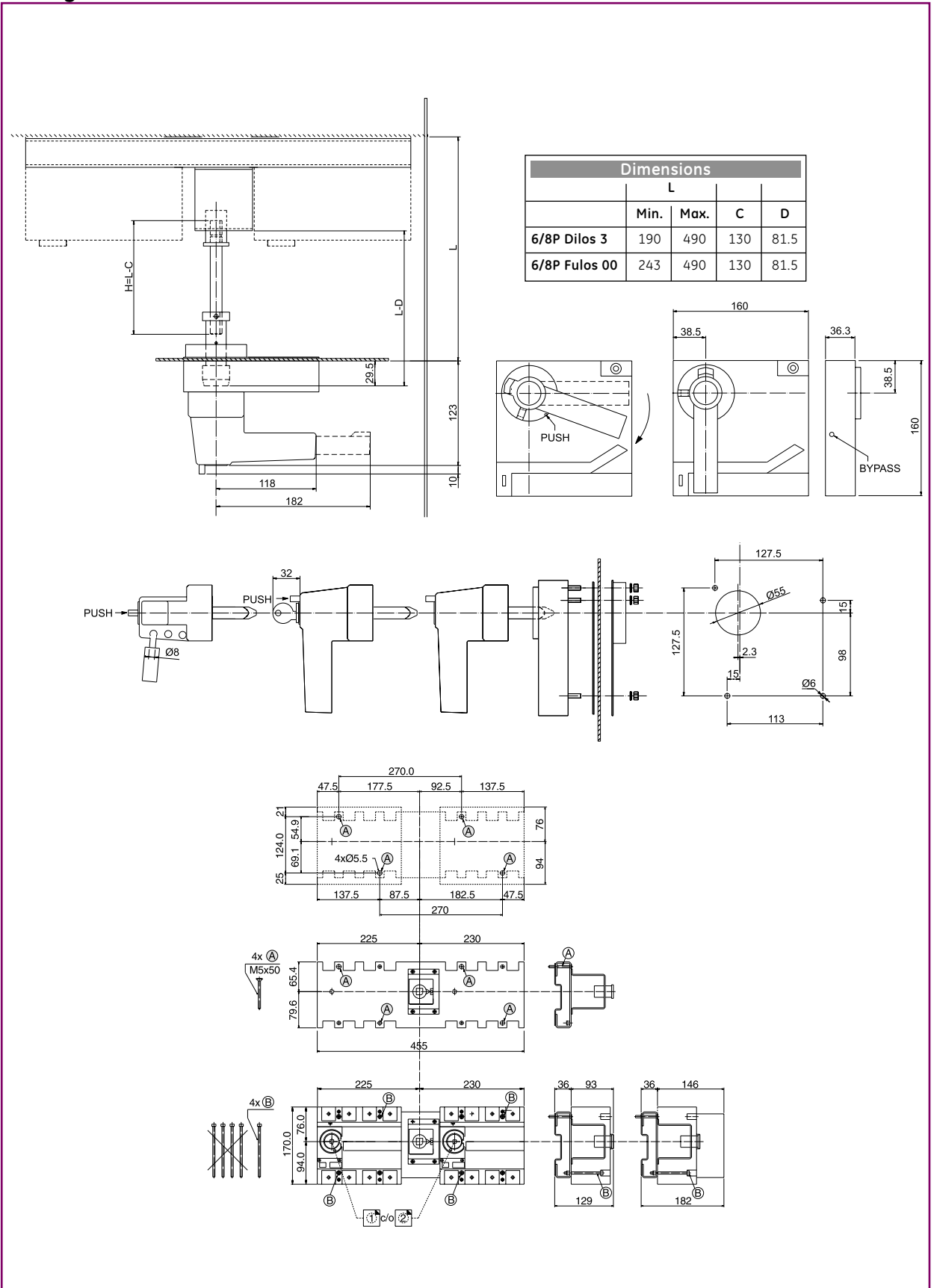
B

C

D

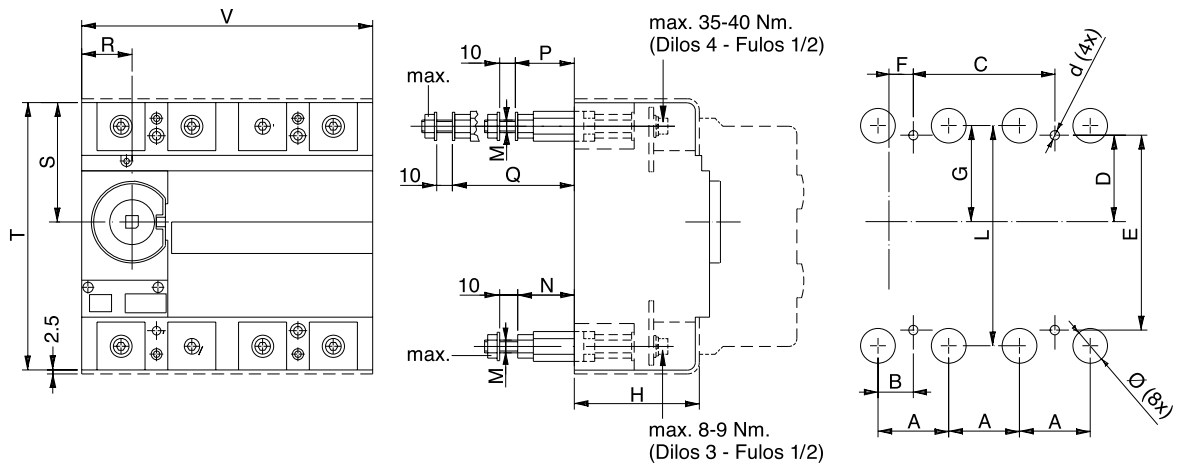
E

X



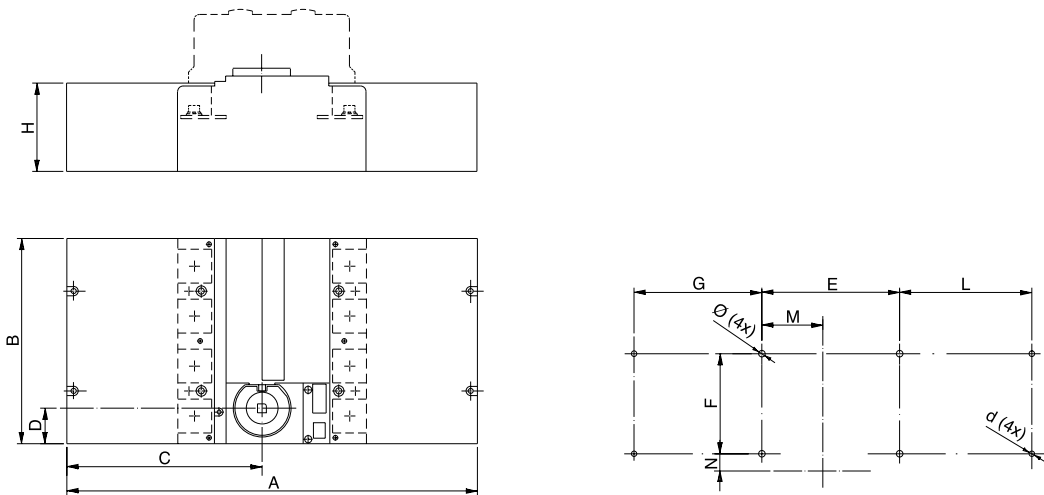
Dimensions

Rear terminals - Dilos 3 / 4 - Fulos 00 / 1 / 2



Dimensions		A	B	C	D	E	F	G	H	L	M	N	Ø	d	MAX.	P	Q	R	S	T	V
Dilos 3 - Fulos 00		45	22.5	90	55	124	15.5	61	80	140	M8	36	22	6	6Nm	-	-	32	76	170	185
Dilos 4 - Fulos 1 / 2		65	32.5	130	68.5	220	30	63.5	110	210	M14	-	30	7	19Nm	51	98	35	85	253	260

Terminal covers - Dilos 3 / 4 - Fulos 00 / 1 / 2



Dimensions		A	B	C	D	E	F	G	H	L	M	N	Ø	d
Dilos 3 - Fulos 00 Long		370	185	176	32	124	90	115	80	119	55	15.5	6	5
Dilos 4 - Fulos 1 / 2 Long		433	260	175	35	220	130	100.5	109	100.5	68.5	30	7	5
Dilos 3 - Fulos 00 Short		250	185	116	32	124	90	55	80	59	65	15.5	6	5
Dilos 4 - Fulos 1 / 2 Short		363	260	140	35	220	130	73	109	65.5	68.5	30	7	5

Dimensions

A

B

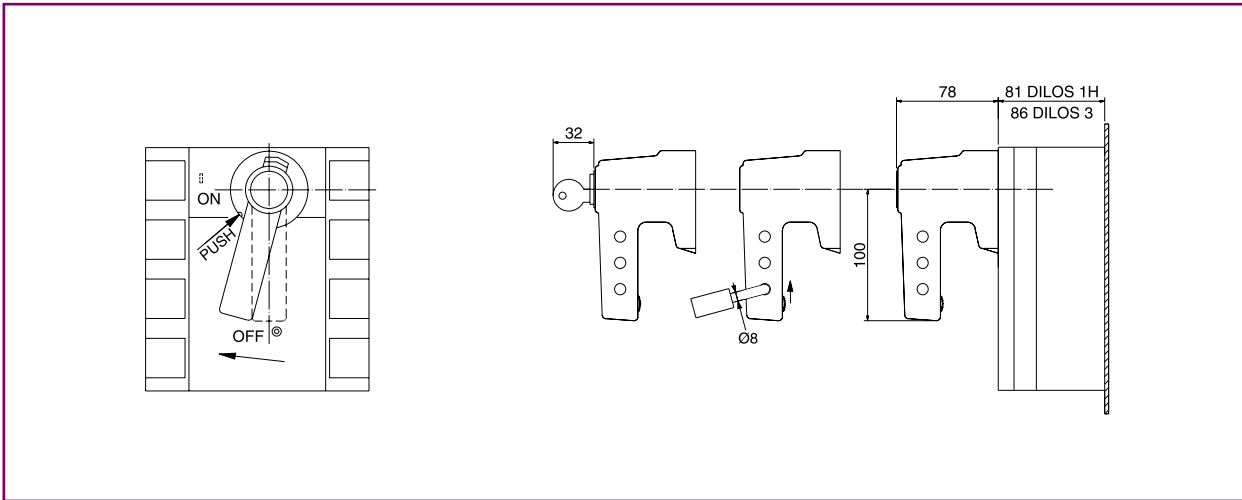
C

D

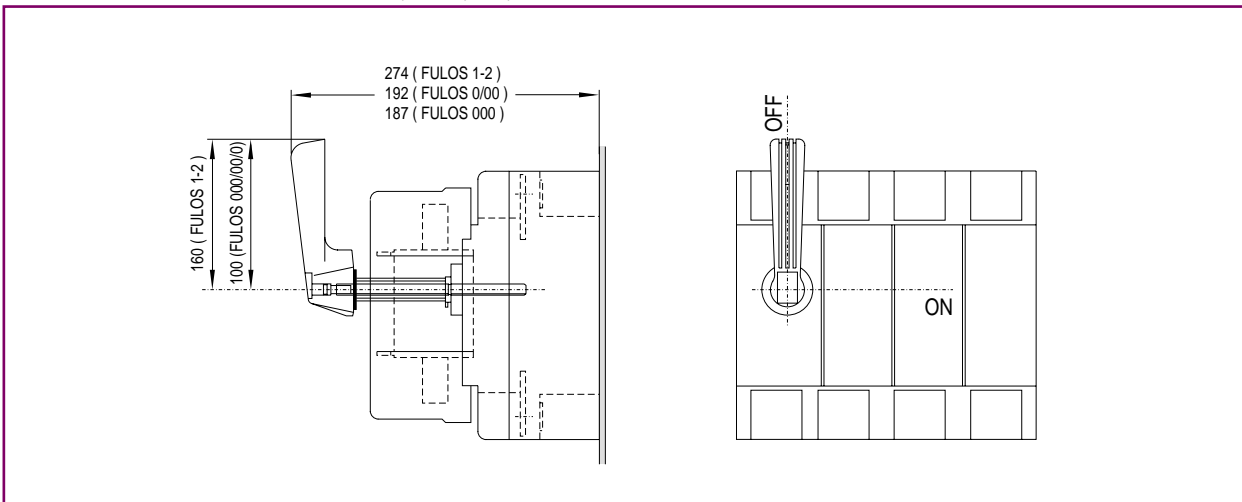
E

X

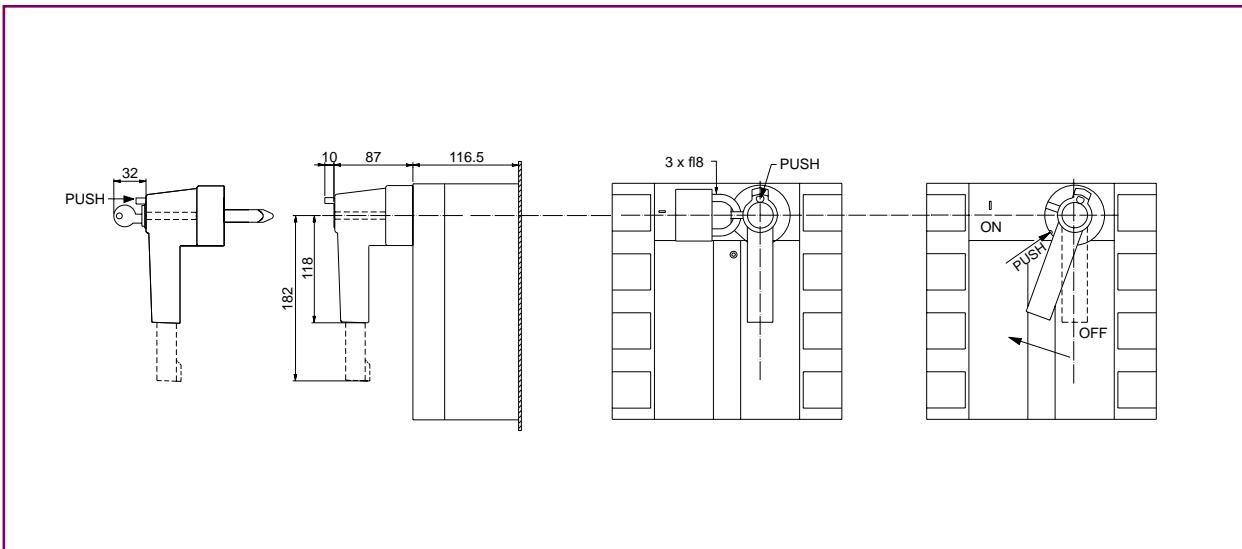
Direct handles for Dilos 1H and Dilos 3



Direct handles for Fulos 000 / 00 / 1 / 2



Direct handles for Dilos 4



A

B

C

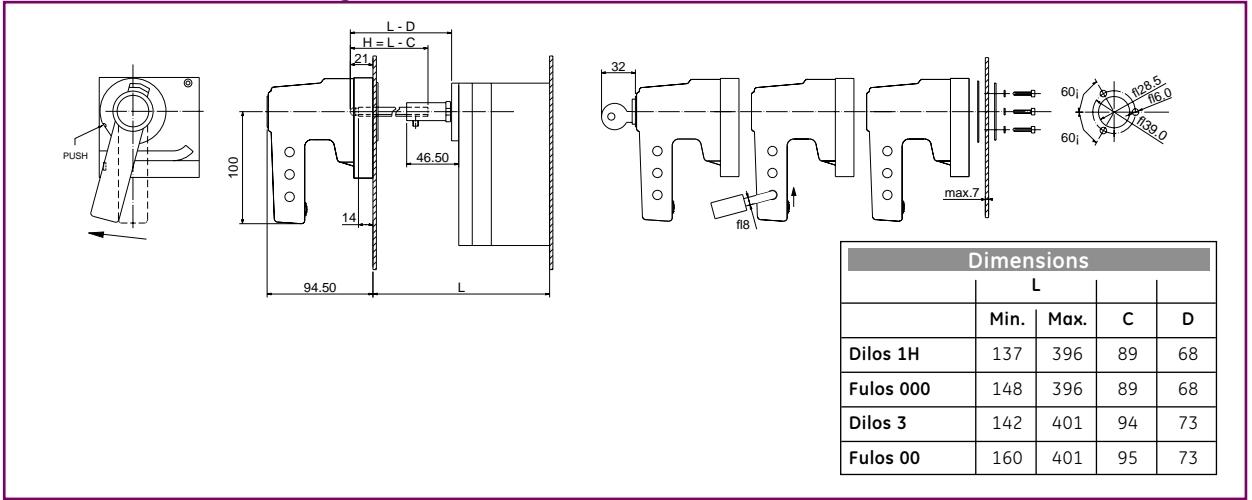
D

E

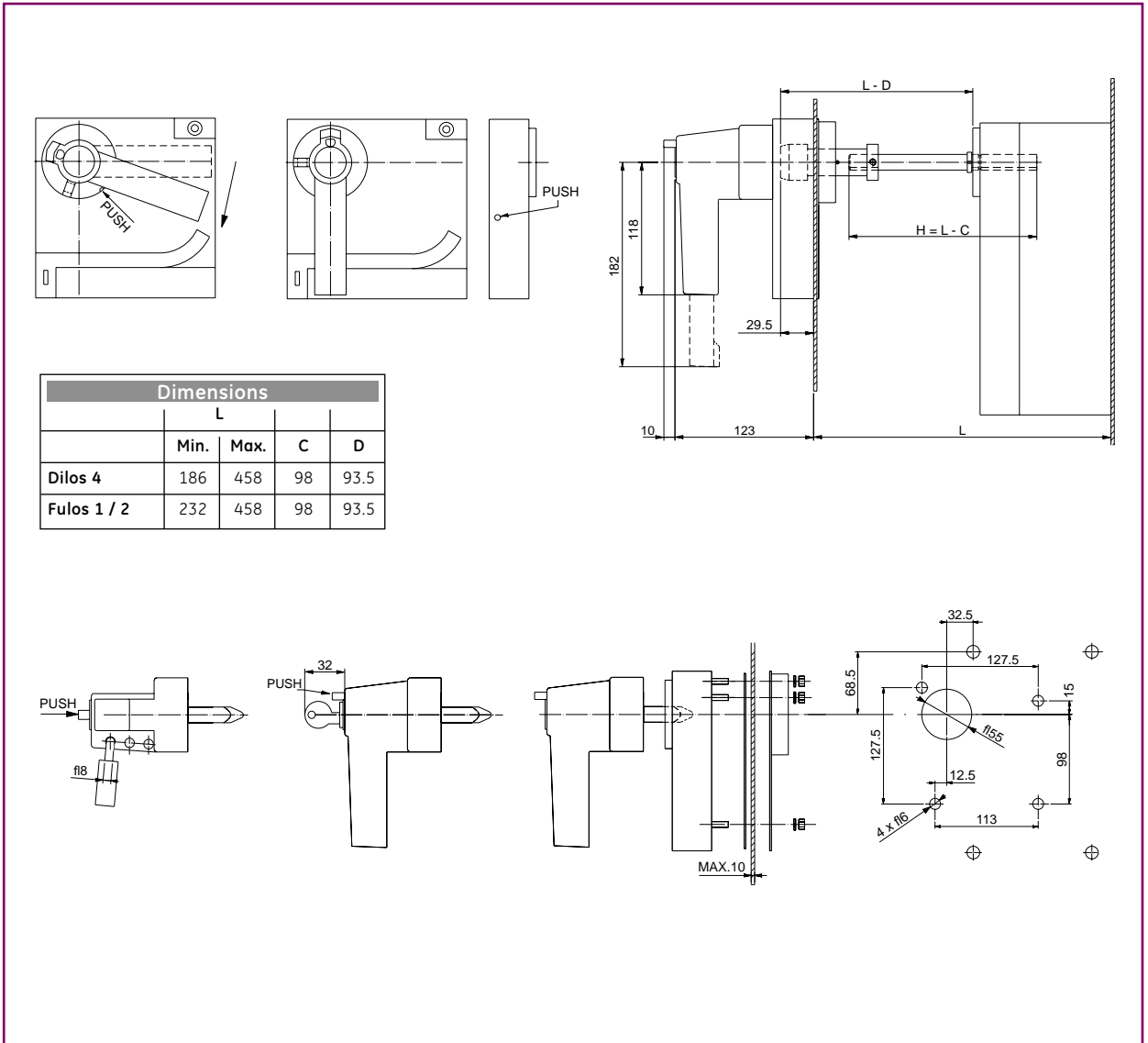
X

Dimensions

Handles for cover or hinged door - Dilos 1H / 3 - Fulos 000 / 00



Direct handles for Dilos 4 - Fulos 1 / 2



Dimensions

A

B

C

D

E

X



Handles for inner door (reduced depth) - Dilos 1H / 3 - Fulos 000 / 00

Dimensions				
	Dilos 1H	Dilos 3	Fulos 000	Fulos 00
b min	20	20	60	66
b max	290	290	290	290

Handles for inner door (reduced depth) - Dilos 4 - Fulos 1 / 2

Dimensions			
	Dilos 4	Fulos 1	Fulos 2
b min	59	94	94
b max	330	330	330

Dilos/Fulos

A

B

C

D

E

X