



Fused loadbreak disconnectors

Fulos 00 DIN - 160A

Fulos 00 BS - 200A



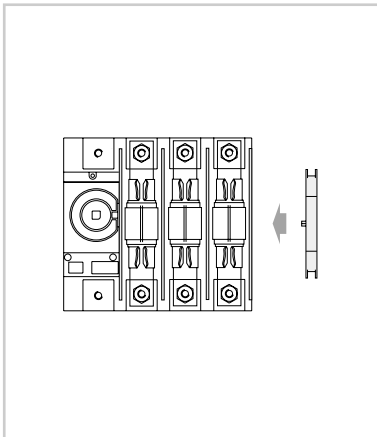
Applications



Approvals / Marking



Add-on devices



Performance

- Panel mounting
- Fused safety disconnector (main disconnector)
- Disconnect function
- Visible contact indication - transparent cover
- Quick make and quick break mechanism
- Independent opening and closing
- Positive contact indication (PCI)
- Very low power losses
- Fuse completely disconnected in "OFF"
- Defeat mechanism rotary handle
- Double knife contacts - high short-circuit resistance
- Number of poles 3P - 4P

Standards

For disconnectors

IEC 60947-1 and IEC 60947-3, DIN VDE 0660 Teil 107, BS EN 60947-3, CEI 17-11 (Fasc. 1039), EN 60947-3, NBN EN 60947-3, NF C 63-130
Safety disconnector (red/yellow) according to DIN VDE 0113 Teil 1

For fuses

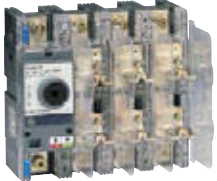

IEC 60269-2-1, BS 88 Part 2 1988, DIN VDE 0636 Teil 1, NF EN 60269-1, NF C 63-211, NF C 63-210

Technical data


	DIN 00	BS A4
Rated thermal current	160A	200A
Rated operational voltage Ue	690V	690V
Rated insulation voltage Ui	1000V	1000V
Rated short-circuit current	100kA	100kA
Terminal capacity (Cu)	30 x 6 mm ²	30 x 6 mm ²

- Technical data ● pg. C.6
- Installation facilities ● pg. D.6
- Dimensions ● pg. E.5

Fulos 00 - Fused loadbreak disconnectors

According to DIN		Description	In (A)	Cat. no.	Ref. no.	Pack.
	3P	NH 00	160	D/062321-201	730563	1
	3P+N	NH 00	160	D/062421-201	730579	1
	3P+NF	NH 00	160	D/062521-201	730595	1
According to BS		Description	In (A)	Cat. no.	Ref. no.	Pack.
	3P	BS A4 (TCP Ø 26 - 690V)	100	D/062322-241	730822	1
		BS A4 (TCP / TFP Ø 33.7 - 690V)	200	D/062322-242	731925	1
	3P+N	BS A4 (TCP Ø 26 - 690V)	100	D/062422-241	730834	1
		BS A4 (TCP / TFP Ø 33.7 - 690V)	200	D/062422-242	731927	1
	3P+NF	BS A4 (TCP Ø 26 - 690V)	100	D/062522-241	730846	1
		BS A4 (TCP / TFP Ø 33.7 - 690V)	200	D/062522-242	731929	1

Fulos 00 - Safety fused loadbreak disconnecter

According to DIN		Description	In (A)	Cat. no.	Ref. no.	Pack.
	3P	NH 00 - yellow label, according to DIN VDE 0113 Teil 1	160	D/062321-203	730564	1
	3P+N	NH 00 - yellow label, according to DIN VDE 0113 Teil 1	160	D/062421-203	730580	1

Accessories

	Direct handles		Handles for cover or hinged door				
	D/062910-251	731436	1	IP65 - Defeat - Padlockable			
	Low grey		With extension shaft 300 mm (8/8)				
	D/062910-253	731437	1				
Low red		D/062920-201	730661	1			
		Black		D/062920-203		730662	1
		Red/yellow		D/062920-221		730663	1
		Black and keylockable		(Keylock Ronis 1104 not included)			
		D/062920-223	730664	1			
		Red/yellow and keylockable		(Keylock Ronis 1104 not included)			
	Handles for inner door		D/062927-202		731056	1	
	Reduced height 55 mm height		Black		D/062927-203	731351	1
	With extension shaft 300 mm		Red/yellow				
IP65 - padlockable				Special set for disconnector with neutral on the right, black			
	Keylock		D/062920-281		730853	1	
	D/769080-000		769080	1	Special set for disconnector with neutral on the right, red/yellow		
	Plug-in for handles (Ronis 1104)						

Accessories Fulos 00 (continued)



Changeover system (I-O-II)
 With extension shaft 300 mm,
 padlockable handle, gasket, flange
 and template IP65 - Defeat

D/062920-265	730665	1
With grey handle		
D/062920-267	731348	1
With red/yellow handle		



As above but with handle 55 mm height -
 for inner door

D/062937-265	731455	1
With black handle		
D/062937-267	731554	1
With red/yellow handle		



6P/8P-system (I-O)
 With extension shaft 300 mm,
 padlockable handle, gasket,
 flange and template
 IP65 - Defeat

D/062920-266	730666	1
With grey handle		



Standard auxiliary contacts
 To be added on the right side

D/061901-001	730252	1
1PCO		
D/061901-002	730253	1
2PCO		



Anticipated auxiliary contacts
 (early make and early break)
 To be mounted inside

D/062921-201	730610	1
1CO		
D/062921-202	730611	1
2CO		



Rear connection with cover

D/062922-253	730629	1
Set of 3 pieces		
D/062922-254	730630	1
Set of 4 pieces		



Inbus key

D/061000-097	730000	1
Insulated S5 - L = 200 mm		

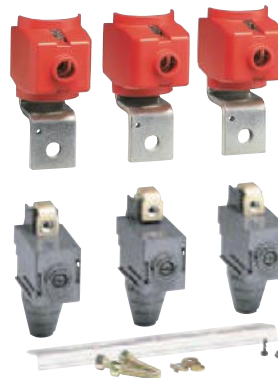
Fuse protection cover

D/062922-225	730617	1
3P		



Terminals (Cu or Al 185 mm²)

D/062922-213	730627	1
Set of 3 V box terminals with cover		
D/062922-214	730628	1
Set of 4 V box terminals with cover		
D/062922-203	730625	1
Set of 3 terminals with cover		
D/062922-204	730626	1
Set of 4 terminals with cover		



Terminal covers 4P

D/062922-220	730615	1
Set of 2 long terminal covers, boxed Sealable		



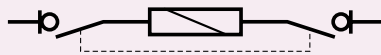
D/062922-226	731459	1
Set of 2 short box terminal covers, IP20 - sealable		



D/062922-221	730616	1
Set of 2 connection bolt covers		



Fulos - Fused loadbreak disconnectors for wall mounting



			Fulos 000 NF 14 x 51	Fulos 000 NF 22 x 58	Fulos 000 DIN 00	Fulos 000 DIN 00	Fulos 000 DIN 00	Fulos 00 DIN 00	Fulos 1 DIN 1
Conventional thermal current I _{th}	(A)		50	100	32	63	100	160	250
Conventional enclosed thermal current I _{the}	(A)		50	100	32	63	100	160	250
Number of poles			3/3+N	3/3+N	3/3+N	3/3+N	3/3+N	3/3+N	3/3+N
Frequency	(Hz)		50/60	50/60	50/60	50/60	50/60	50/60	50/60
Rated thermal current at	40°C	(A)	50	125	32	63	125	160	250
	50°C	(A)	50	112	32	63	112	160	250
	60°C	(A)	50	100	32	63	100	160	250
Power loss per pole (switch only)	(W)		1.6	8.5	0.65	2.5	6.5	5.2	6.5
Power loss per pole (fuse only)	(W)		5	7.5	7.5	7.5	7.5	15	32
Terminal capacity (Cu)	minimum	(mm ²)	6	6	6	6	6	Cu-rail	Cu-rail
	maximum	(mm ²)	50	50	50	50	50	30x6	2x40x6
Maximum torque on terminals	(Nm)		12	12	12	12	12	12	60
Rated operational voltage U _e	(V)		690	690	690	690	690	690	690
Rated insulation voltage U _{imp}	(V)		1000	1000	1000	1000	1000	1000	1000
Rated impulse withstand voltage (2000m) U _{imp}	(kV)		8	8	8	8	8	8	8
Impulse test voltage at sea level	(kV)		12.3	12.3	12.3	12.3	12.3	12.3	12.3
Rated operational current I _e ⁽¹⁾	U _e =400V	(A)	50	125	32	63	125	160	250
	AC21A up to 250A U _e =415V	(A)	50	125	32	63	125	160	250
	AC21B from 315A U _e =500V	(A)	50	125	32	63	125	160	250
	U _e =690V	(A)	50	125	32	63	125	160	250
Rated operational current I _e ⁽¹⁾	U _e =400V	(A)	50	125	32	63	125	160	250
	AC22A up to 250A U _e =415V	(A)	50	125	32	63	125	160	250
	AC22B from 315A U _e =500V	(A)	50	125	32	63	125	160	250
	U _e =690V	(A)	50	125	32	63	125	160	250
Rated operational current I _e ⁽¹⁾	U _e =400V	(A)	50	125	32	63	125	160	250
	AC23A up to 250A U _e =415V	(A)	50	125	32	63	125	160	250
	AC23B from 315A U _e =500V	(A)	50	100	32	63	125	160	250
	U _e =690V	(A)	50	80	32	50	50	125	250
Maximum rated operational power at rated duty AC23	U _e =400V	(kW)	25	69	16	30	69	88	135
	U _e =415V	(kW)	27	72	18	33	72	92	140
	U _e =500V	(kW)	36	86	23	44	86	110	175
	U _e =690V	(kW)	45	45	29	45	45	115	238
Rated making and breaking capacity at 500V AC23A	making	(A)	1000	1000	1000	1000	1000	1600	2500
	breaking	(A)	800	800	800	800	800	1280	2000
Rated conditional short-circuit current with back-up protection featuring the same current rating as the switch (kA rms)	400V	(kA)	50	100	50	50	100	100	100
	415V	(kA)	50	100	50	50	100	100	100
	500V	(kA)	50	100	50	50	100	100	100
	690V	(kA)	33	33	33	33	33	100	100
Rated capacity power at 400V	(kVAR)		24	60	16	30	60	77	120
Rated operational current DC23A	2P in series 110V	(A)	50	100	32	63	100	160	250
	2P in series 220V	(A)	50	63	32	63	-	100	160
	4P in series 220V	(A)	-	100	-	-	100	160	250
Operating torque	(Nm)		8	8	8	8	8	12	40
Force	(N)		80	80	80	80	80	120	333
Durability (number of operational cycles)	electrical		4000	3000	5000	3000	1500	1000	1000
	mechanical (min)		10000	10000	10000	10000	10000	10000	5000
Weight	3P	(kg)	1.20	1.20	1.27	1.27	1.27	3.05	10.60
	4P	(kg)	1.27	1.27	1.35	1.35	1.35	3.21	11.20

(1) NF 125A AC21..23B
DIN 125A AC21..23B

Technical data

A

B

C

D

E

X



Fulos 2 DIN 2	Fulos 3S DIN 3	Fulos 4 DIN 4	Fulos 000 BS A2	Fulos 000 BS A3	Fulos 000 BS A3	Fulos 00 BS A4	Fulos 00 BS A4	Fulos 1 BS B1-B2	Fulos 1 BS B4	Fulos 2 BS B3-B4	Fulos 3S BS C1-C2	Fulos 3S BS C3	Fulos 4 BS D1
400	630	1000	32	63	100	100	200	200	400	400	630	800	1250
400	630	1000	32	63	100	100	200	200	400	400	630	800	1250
3/3+N	3/3+N	3/3+N	3/3+N	3/3+N	3/3+N	3/3+N	3/3+N	3/3+N	3/3+N	3/3+N	3/3+N	3/3+N	3/3+N
50/60	50/60	50/60	50/60	50/60	50/60	50/60	50/60	50/60	50/60	50/60	50/60	50/60	50/60
400	630	1000	32	63	100	100	200	200	400	400	630	800	1250
400	567	900	32	63	100	100	200	200	400	400	567	720	1125
400	504	800	32	63	100	100	200	200	400	400	504	640	1000
16			2.5	2.5	6.5	2	4.8	3.6	15	15	-	-	-
45	50	125	7.5	7.5	7.5	16	32	32	45	45	50	75	195
Cu-rail	Cu-rail	Cu-rail	6	6	6	Cu-rail	Cu-rail	Cu-rail	Cu-rail	Cu-rail	Cu-rail	Cu-rail	Cu-rail
2x40x6	2x40x6	2x50x10	50	50	50	30x6	30x6	2x40x6	2x40x6	2x40x6	2x40x6	2x40x6	2x60x10
60	35	35	12	12	12	12	12	60	60	60	35	35	35
690	1000	690	690	690	690	690	690	690	690	690	1000	1000	690
1000	1500	1000	1000	1000	1000	1000	1000	1000	1000	1000	1500	1500	1000
8	8	8	8	8	8	8	8	8	8	8	8	8	8
12.3	12.3	12.3	12.3	12.3	12.3	12.3	12.3	12.3	12.3	12.3	12.3	12.3	12.3
400	630	1000	32	63	100	100	200	200	400	400	630	800	1250
400	630	1000	32	63	100	100	200	200	400	400	630	800	1250
400	630	1000	32	63	100	100	200	200	400	400	630	800	1250
400	630	1000	32	63	100	100	200	200	400	400	630	800	1250
400	630	1000	32	63	100	100	200	200	400	400	630	800	1250
400	630	1000	32	63	100	100	200	200	400	400	630	800	1250
400	630	1000	32	63	100	100	200	200	400	400	630	800	1250
400	630	1000	32	63	100	100	200	200	400	400	630	800	1250
400	630	1000	32	63	100	100	200	200	400	400	630	800	1250
400	630	1000	32	63	100	100	200	200	400	400	630	800	1250
300	630	1000	32	50	80	100	200	200	300	300	630	800	1250
218	-	-	16	30	50	50	88	100	218	218	330	330	-
230	-	-	18	33	55	55	92	110	230	230	-	-	-
295	-	-	23	44	72	72	175	140	295	295	-	-	-
290	-	-	29	45	45	90	190	190	290	290	-	-	-
4000	6300	10000	1000	1000	1000	1600	2400	3200	4000	4000	6300	8000	12500
3200	5040	8000	800	800	800	1000	2000	2800	3200	3200	5040	6400	10000
100	50	100	50	50	65	100	100	100	100	100	50	50	100
100	50	100	50	50	65	100	100	100	100	100	50	50	100
100	-	-	50	50	-	100	100	100	100	100	-	-	-
100	-	-	50	33	-	100	80	100	100	100	-	-	-
193	300	475	16	30	48	48	97	97	193	193	300	380	600
400	500	1000	32	63	100	100	200	200	400	400	500	500	1000
-		1000	32	63	-	63	160	160	-	-	-	-	1000
400	-	-	-	-	100	100	200	200	400	400	-	-	-
40	45	80	8	8	8	12	12	40	40	40	45	45	80
333	160	174	80	80	80	120	120	333	333	333	160	160	174
700	1000	1000	3000	3000	3000	1500	1000	1000	700	700	1000	1000	1000
5000	4000	4000	15000	15000	15000	10000	10000	5000	5000	5000	4000	4000	4000
10.60	13.00	33.00	1.22	1.22	1.27	3.11	3.11	11.20	11.20	11.20	13.00	13.00	33.00
11.20	14.50	42.00	1.29	1.29	1.35	3.27	3.27	11.80	11.80	11.80	14.50	14.50	42.00

A

B

C

D

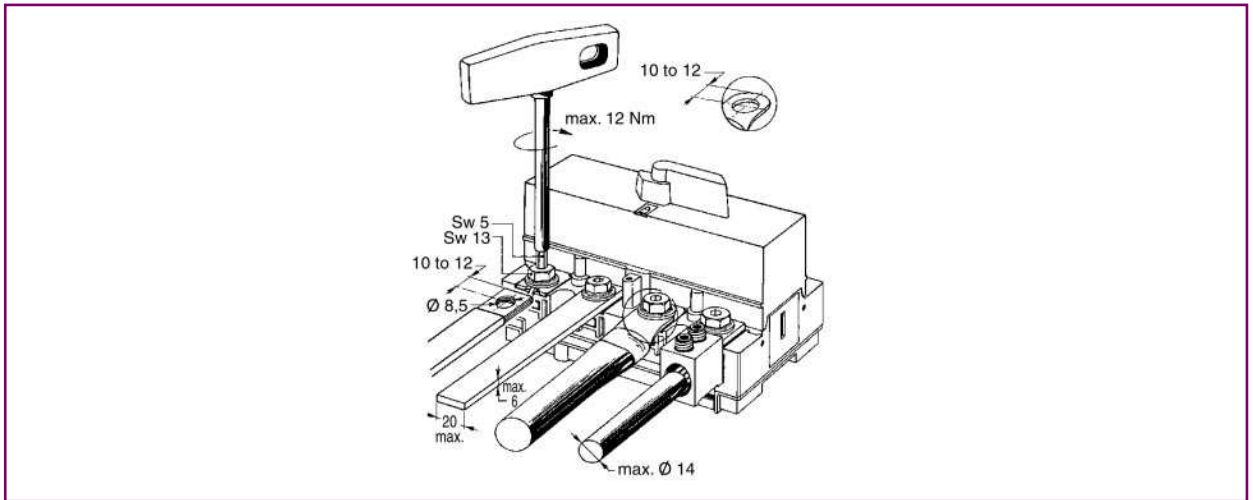
E

X

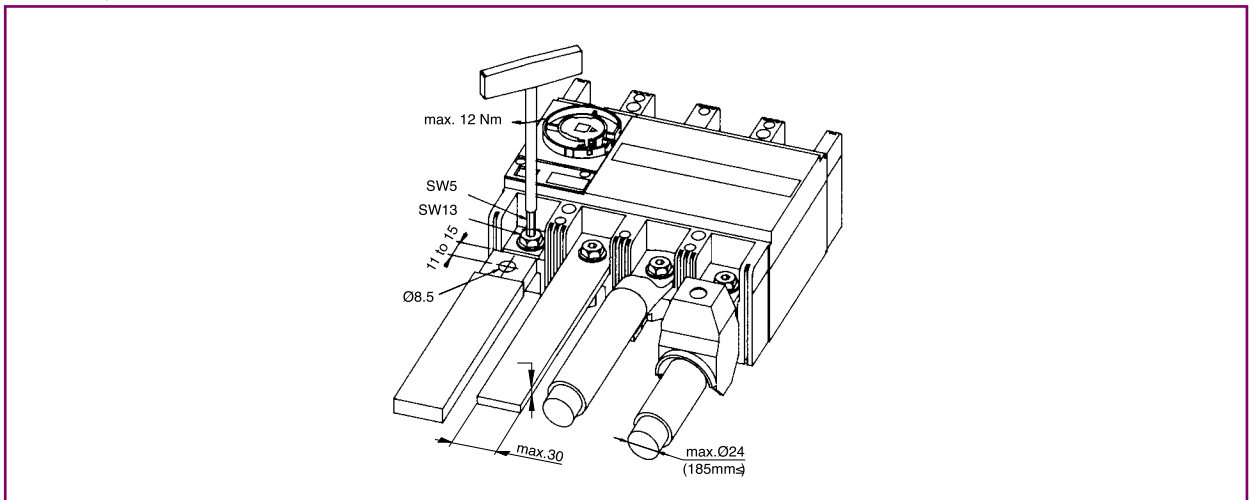


Connection possibilities

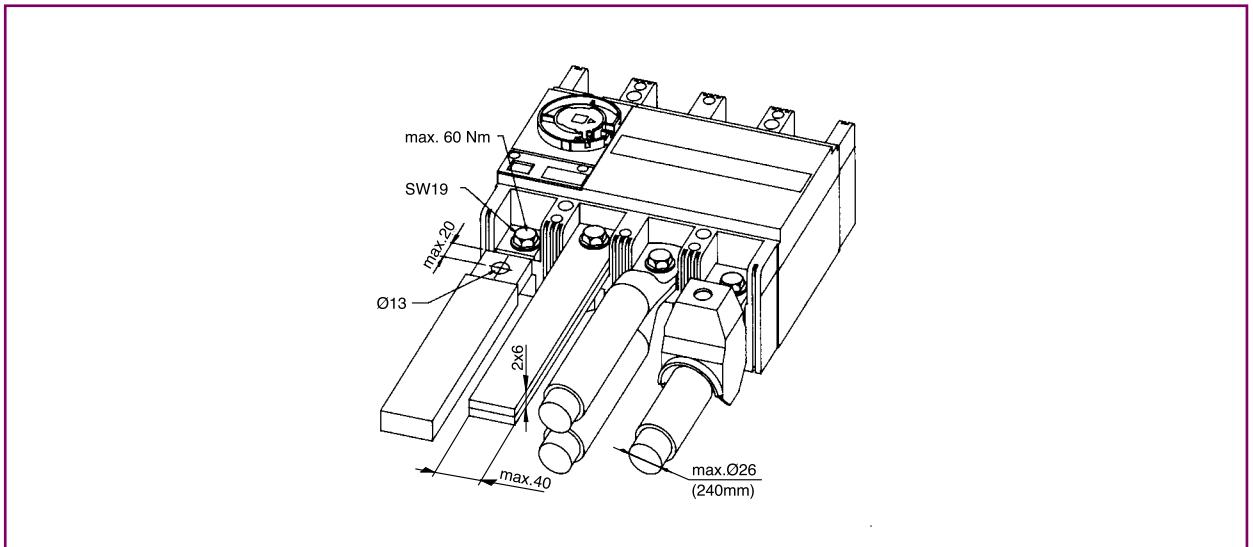
Dilos 2



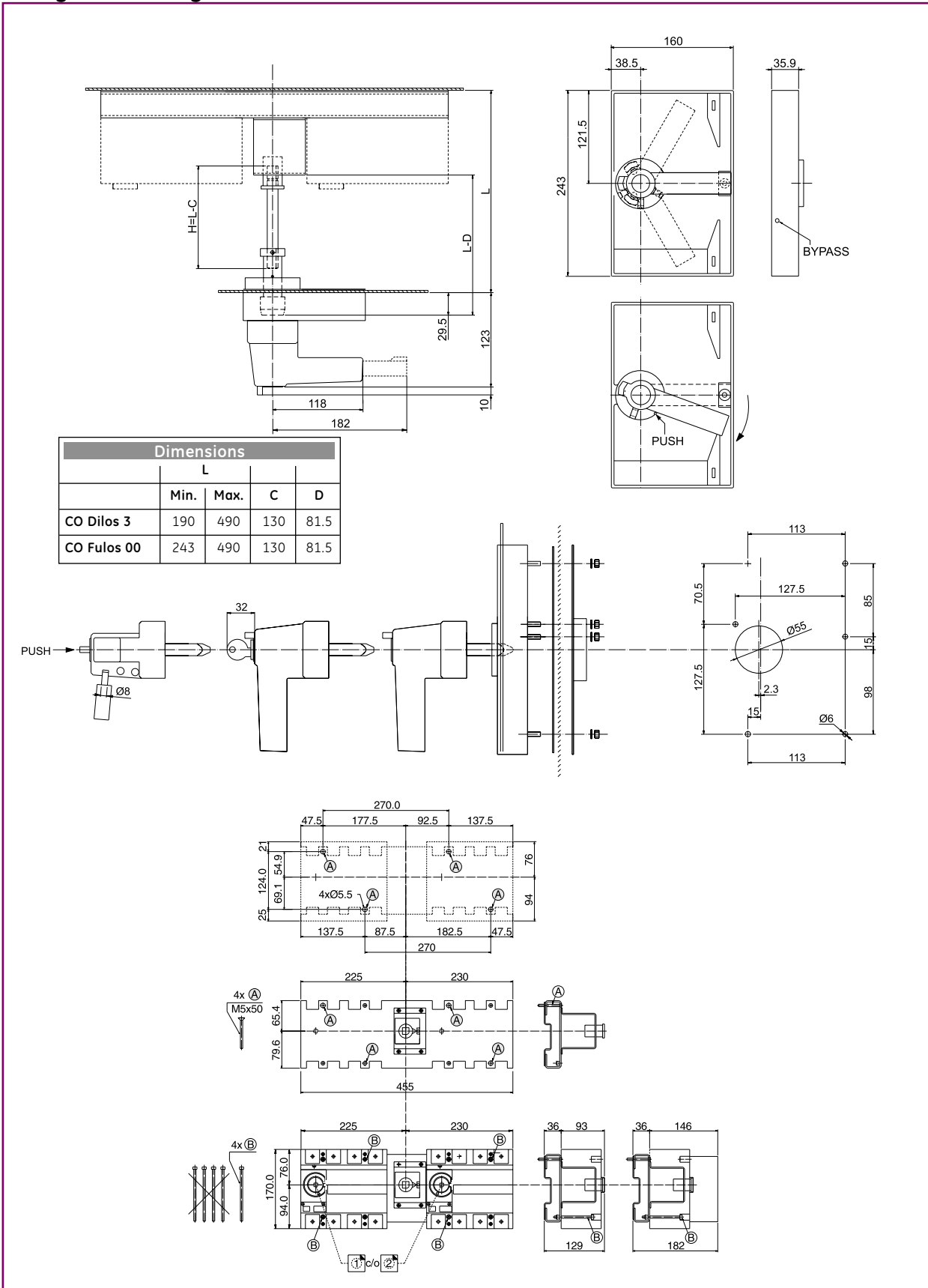
Dilos 3 / Fulos 00



Dilos 4 / Fulos 1 / Fulos 2



Changeover (CO) system - Dilos 3 / Fulos 00



Dilos/Fulos

A

B

C

D

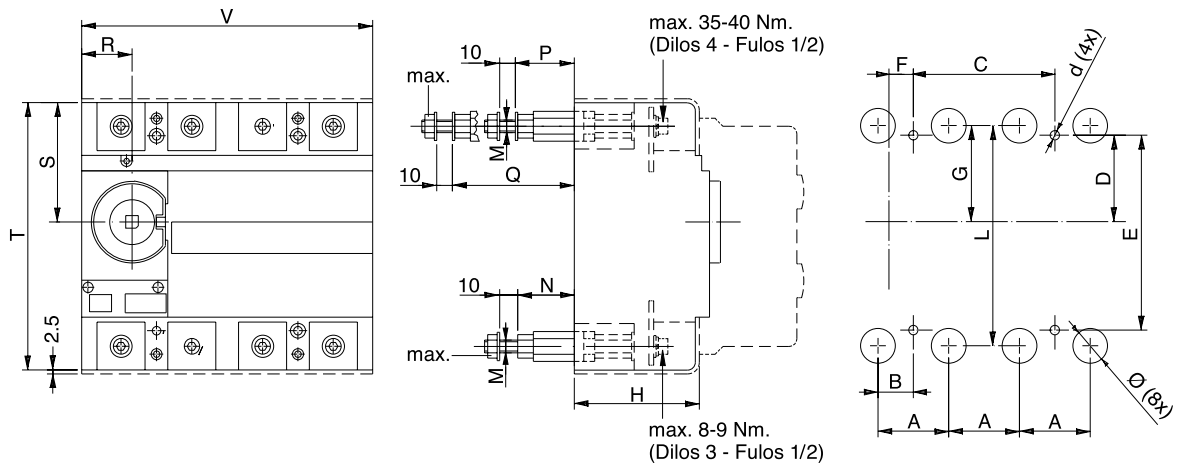
E

X



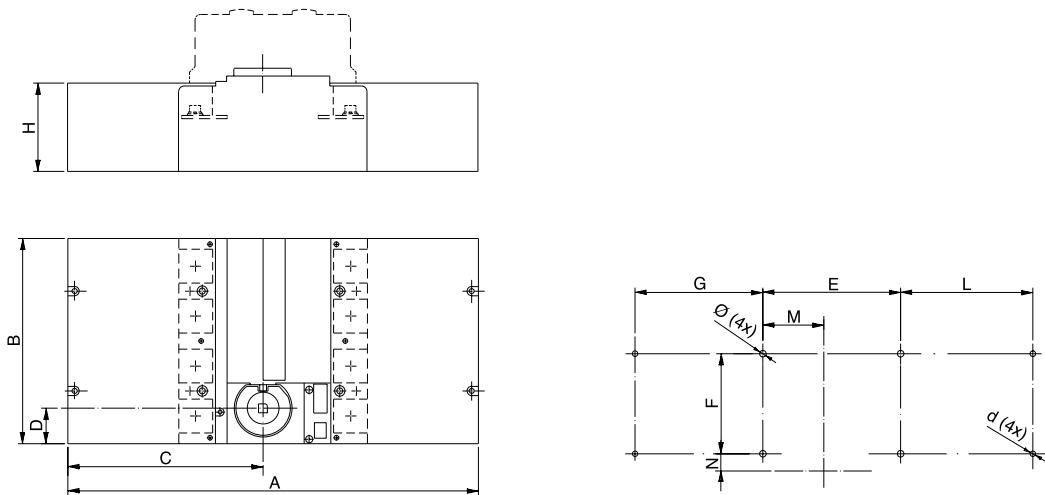
Dimensions

Rear terminals - Dilos 3 / 4 - Fulos 00 / 1 / 2



Dimensions		A	B	C	D	E	F	G	H	L	M	N	Ø	d	MAX.	P	Q	R	S	T	V
Dilos 3 - Fulos 00		45	22.5	90	55	124	15.5	61	80	140	M8	36	22	6	6Nm	-	-	32	76	170	185
Dilos 4 - Fulos 1 / 2		65	32.5	130	68.5	220	30	63.5	110	210	M14	-	30	7	19Nm	51	98	35	85	253	260

Terminal covers - Dilos 3 / 4 - Fulos 00 / 1 / 2



Dimensions		A	B	C	D	E	F	G	H	L	M	N	Ø	d
Dilos 3 - Fulos 00 Long		370	185	176	32	124	90	115	80	119	55	15.5	6	5
Dilos 4 - Fulos 1 / 2 Long		433	260	175	35	220	130	100.5	109	100.5	68.5	30	7	5
Dilos 3 - Fulos 00 Short		250	185	116	32	124	90	55	80	59	65	15.5	6	5
Dilos 4 - Fulos 1 / 2 Short		363	260	140	35	220	130	73	109	65.5	68.5	30	7	5

Dimensions

A

B

C

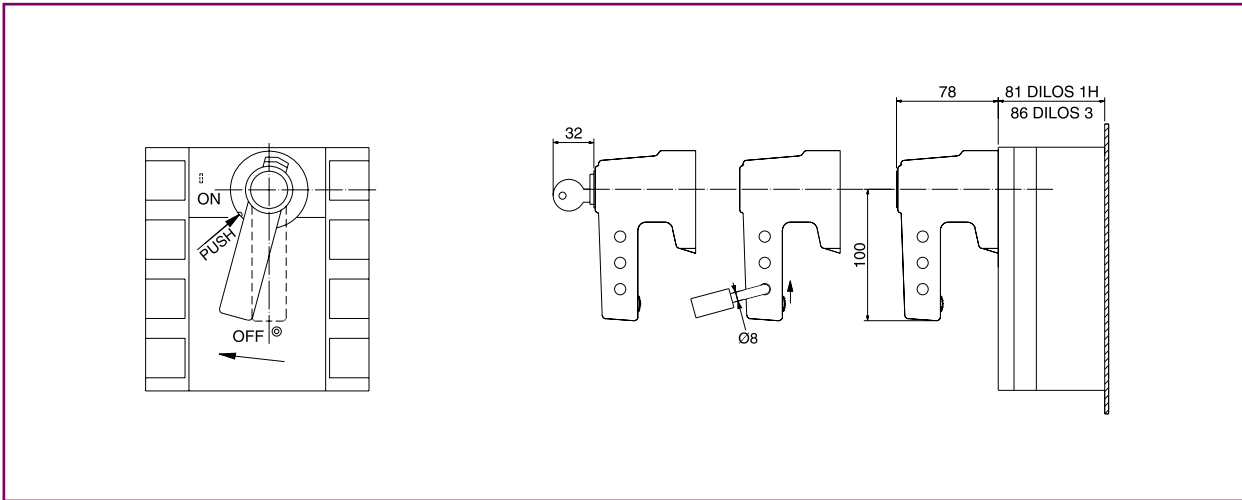
D

E

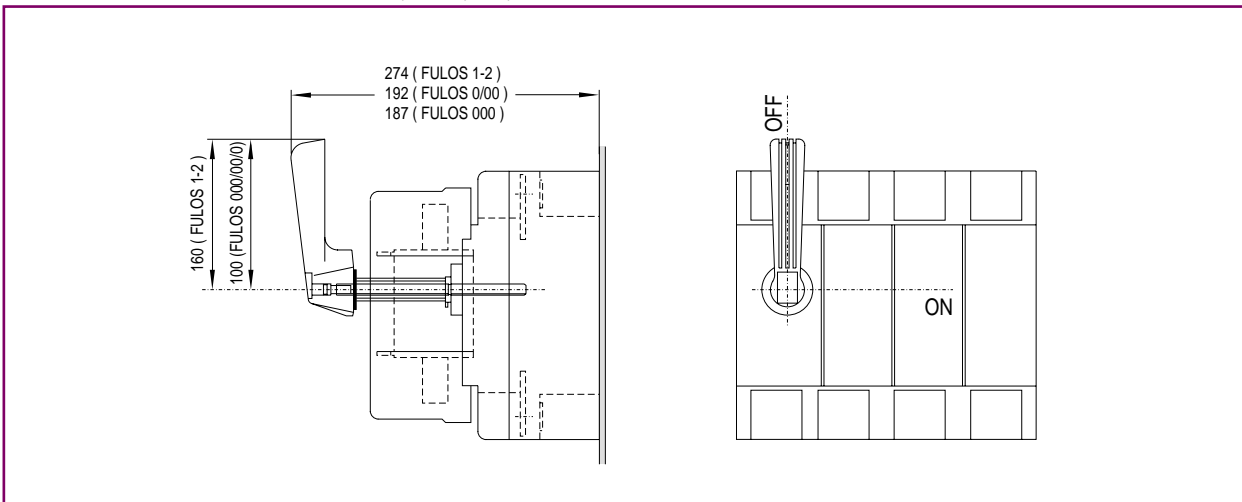
X



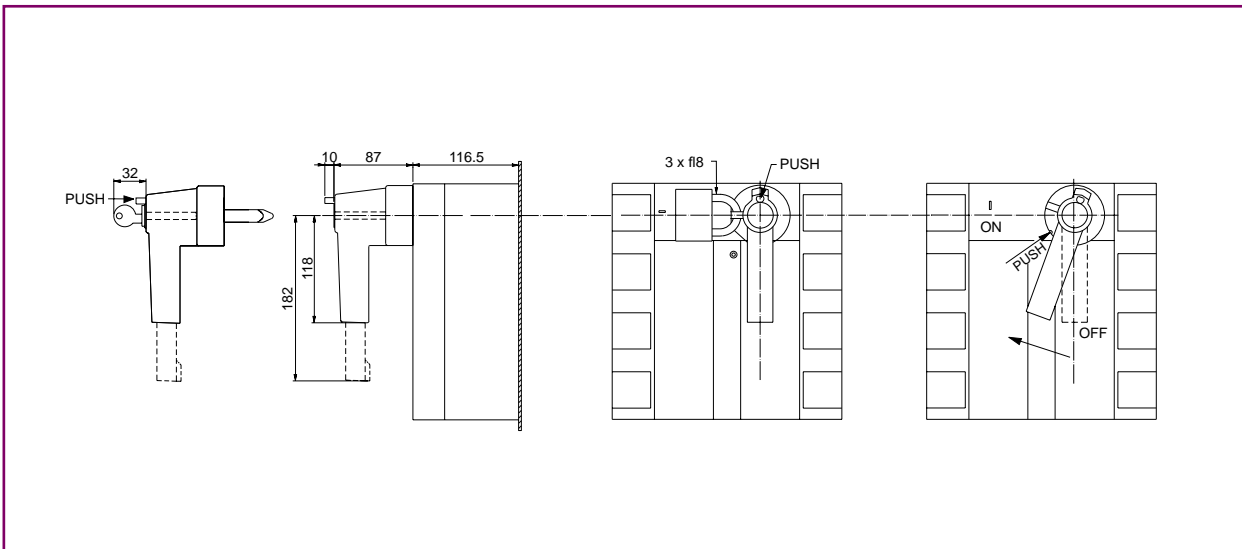
Direct handles for Dilos 1H and Dilos 3



Direct handles for Fulos 000 / 00 / 1 / 2



Direct handles for Dilos 4



A

B

C

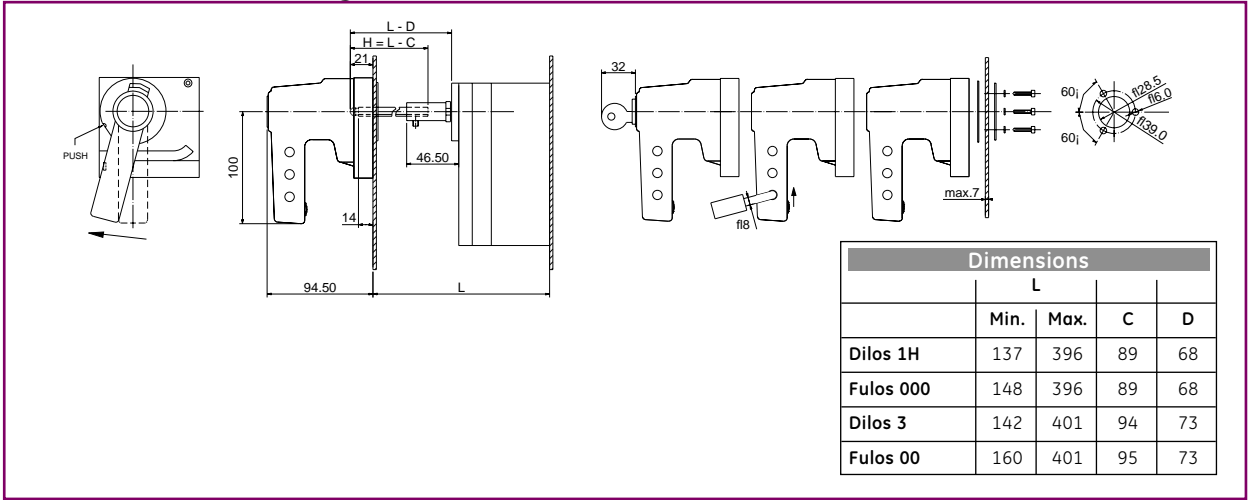
D

E

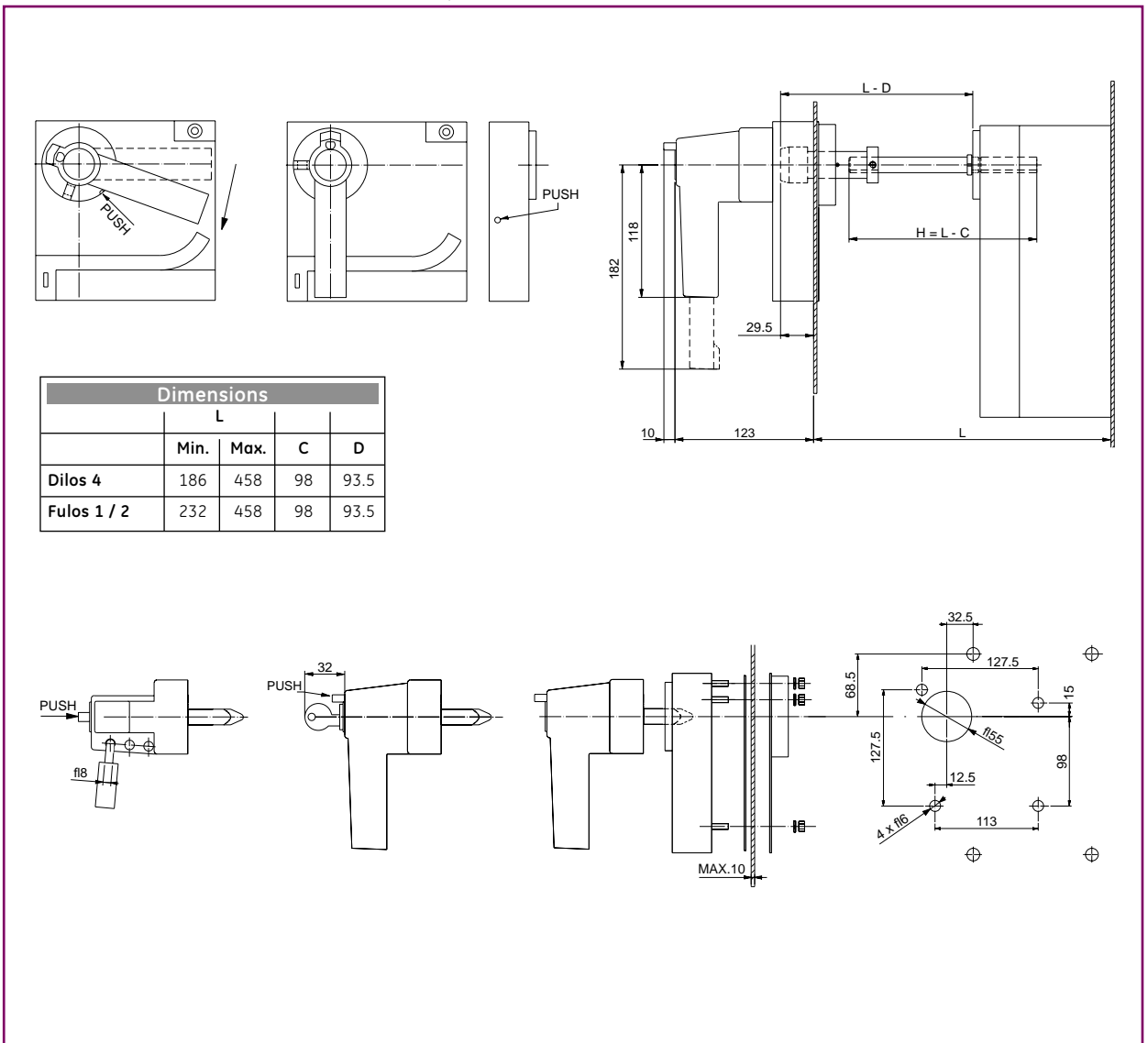
X

Dimensions

Handles for cover or hinged door - Dilos 1H / 3 - Fulos 000 / 00



Direct handles for Dilos 4 - Fulos 1 / 2



Dimensions

A

B

C

D

E

X



Handles for inner door (reduced depth) - Dilos 1H / 3 - Fulos 000 / 00

Dimensions				
	Dilos 1H	Dilos 3	Fulos 000	Fulos 00
b min	20	20	60	66
b max	290	290	290	290

Handles for inner door (reduced depth) - Dilos 4 - Fulos 1 / 2

Dimensions			
	Dilos 4	Fulos 1	Fulos 2
b min	59	94	94
b max	330	330	330